

Sent over the IEEE802.1 email reflector

STDS-802-1-L@LISTSERV.IEEE.ORG

15 January 2024

IEEE802.1 January 2024 Interim Session Heidelberg Germany Logistics Travel and Useful Information

NEC Laboratories Europe

Nader Zein

Chief Engineer

IEEE 802.1 Interim Session - January 2024

22 January 2024 – 26 January 2024

Heidelberg Marriott Hotel

**16 Vangerowstraße
Heidelberg, 69115
Germany**

[IEEE 802.1](#) and [NEC Laboratory Europe](#) are pleased to welcome you to the January 2024 interim session hosted by NEC Laboratory Europe in Heidelberg, Germany. Participation in IEEE 802.1 sessions and meetings is open to all, and not limited to IEEE or IEEE SA members. This is a hybrid event with both in-person and virtual (i.e. remote) participation options. Registration is required both for in-person and remote attendees.

This interim session will include discussion on TSN standards, TSN profiles for various industries (automotive, aerospace, industrial automation), Nendica, and Security amongst other topics.

Please See IEEE 802.1 Interim Session Schedule for UpToDate information

[January 2024 Interim Session in Heidelberg, Germany \(Hybrid\) | \(ieee802.org\)](#)

Registration deadline is **January 21, 2024**

Session Event Location and contact information

This January 2024 Interim session is taking place at
Heidelberg Marriott Hotel
Vangerowstraße 16, 69115 Heidelberg, Germany

Your Host contact from the host NEC Labs Europe:
Nader Zein <nader.zein@emea.nec.com
Akiko Bain <Akiko.bain@emea.nec.com

Your Contact at the Heidelberg Hotel:

ELENA BORMANN | CONVENTION SALES EXECUTIVE
<Elena.Bormann@marriotthotels.com>

For other enquiry and guest support, please contact the hotel reception
T: +49 6221 908 0 (only "0" from the room phone)

marriotthotels.com

[FACEBOOK \[facebook.com\]](https://www.facebook.com) | [LINKEDIN \[linkedin.com\]](https://www.linkedin.com) | [INSTAGRAM \[instagram.com\]](https://www.instagram.com)



Travel Information

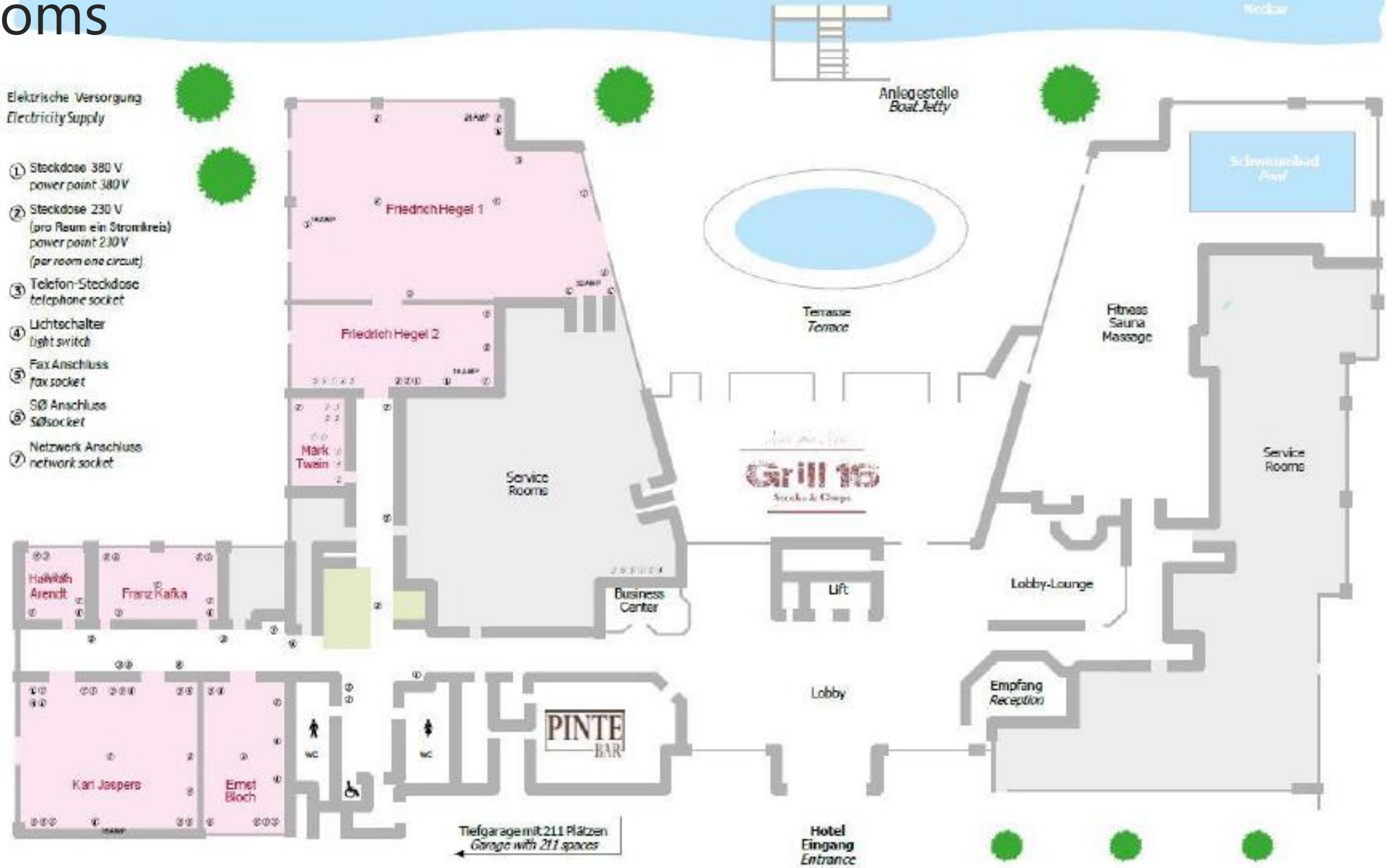
- ◆ Address: Heidelberg Marriott Hotel, Vangerowstrasse 16, Heidelberg, Baden-Wurttemberg, Germany, 69115.
- ◆ Google Map Location:
<https://www.google.com/maps/search/?api=1&query=49.409035%2C8.67282>
- ◆ Closest Airports:
 - Mannheim City Airport:
 - Distance From Property: 15.4 KM; Phone Number: +49 621-4193960; [Visit Website](#)
 - Frankfurt Airport:
 - Distance From Property: 82.7 KM; Phone Number: +49 0180-63724636; [Visit Website](#)
 - Bus services from Frankfurt airport:
 - <https://www.flixbus.de/fernbus/frankfurt-flughafen>
 - TLS [Reliable Airport Transfer to Frankfurt – TLS \(tls-heidelberg.de\)](https://www.tls-heidelberg.de). It has frequent shuttle per day.
 - [Frankfurt Airport Shuttle \(frankfurt-airport-shuttles.de\)](https://www.frankfurt-airport-shuttles.de) . It has limited number of shuttle per day but much cheaper than the first.
 - By Train, please check the Deutsche Bahn (German train service) website in English. It includes information on strikes dates if any and more: <https://int.bahn.de/en>

Meeting rooms

- ◆ Registration room is in Friedrich Hegel II
- ◆ Main meeting room is Friedrich Hegel I
- ◆ Large Breakout meeting room is Karl Jasper
- ◆ Small Breakout room is Ernst Bloch

Elektrische Versorgung Electricity Supply

- ① Steckdose 380 V
power point 380 V
- ② Steckdose 230 V
(pro Raum ein Stromkreis)
power point 230 V
(per room one circuit)
- ③ Telefon-Steckdose
telephone socket
- ④ Lichtschalter
light switch
- ⑤ Fax Anschluss
fax socket
- ⑥ SØ Anschluss
SØ socket
- ⑦ Netzwerk Anschluss
network socket



Breaks Food and coffee

- ◆ Breakfast included in your hotel room reservation (if you are staying at the meetings hotel)
- ◆ Unlimited soft drinks in the main meeting room and the breakout rooms
- ◆ Lunch included daily Monday 22nd to Friday 26th 12:30 to 13:30.
 - Lunch buffet "à la Chef" or a 3-course-menu
 - Soft drinks, mineral water, coffee & tea during lunch
- ◆ 2 coffee breaks with seasonal fruits, savory snacks & pastries, seasonally flavored water, coffee and tea specialties.
Coffee times as per the interim session schedule:
 - Morning coffee break 10:00-10:30
 - Afternoon coffee break 15:00-15:30
- ◆ Dinner Social Event on Wednesday from 18:30 by Shuttle bus from hotel and it will take place at
Gasthaus "Zum Roten Ochsen"
Inhaber: Philipp Spengel
Hauptstraße 217
69117 Heidelberg
Kontakt:
 - ◆ Telefon: 06221 20977
 - ◆ Telefax: 06221 164383
 - ◆ E-Mail: info@roterochsen.de
 - ◆ <http://www.roterochsen.de>
- ◆ ***Please Let Akiko Bain san at the registration desk know your choice for the main course chicken/beef/vegetarian***

Verhalten bei Unfällen In case of accidents

Ruhe bewahren
Keep calm

1. Unfall melden **Telefon: 9-112**
Report the accident
Call: **9-112**



Wie geschah es?
Where did it happen?
Was geschah?
What happened?
Wie viele Verletzte?
How many people are injured?
Welche Arten von Verletzungen?
What types of injuries?
Warten auf Rückfragen!
Wait for further questions!

2. Erste Hilfe
First aid



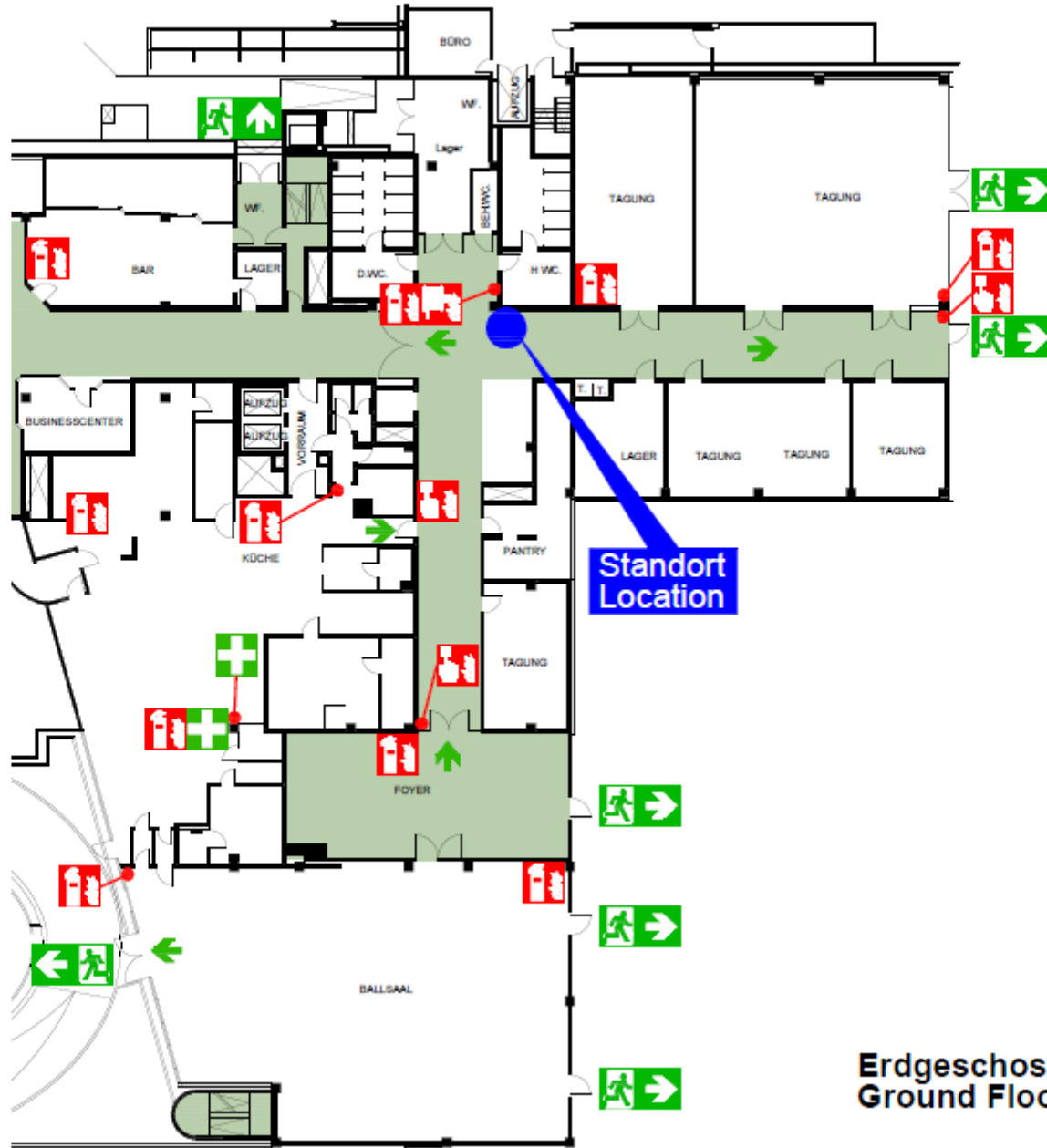
Abseicherung des Unfallortes
Secure the accident scene
Versorgung der Verletzten
Assist injured persons
Anweisungen beachten
Follow instructions

3. Weitere Maßnahmen
Further action

Rettungsdienste einfordern
Direct rescue services
Schadstoffe entfernen
Disperse chemicals

Legende

- Standort
Location
- Rettungsweg
Escape Route
- Notausgang
Emergency Exit
- Sammelstelle
(Parkplatz)
Assembly Point
(Parking spot)
- Feuerlöscher
Fire Extinguisher
- Wandhydrant
Wall Hydrant
- Brandmelder
Manual Fire Alarm
- Aufzug
Elevators
- Treppe
Stairs



Standort
Location

Erdgeschoss
Ground Floor

Verhalten im Brandfall In case of fire

Ruhe bewahren
Keep calm

1. Brand melden
Report the fire



Brandherd betätigen oder
Sound the fire alarm or
Telefon: **9-112**
Call: **9-112**
Wo ist es passiert?
Where did it happen?
Was ist passiert?
What happened?
Wie viele sind betroffen/ verletzt?
How many people are affected/ injured?
Wer meldet?
Who is reporting?
Warten auf Rückfragen!
Wait for further questions!

2. In Sicherheit bringen
Evacuation



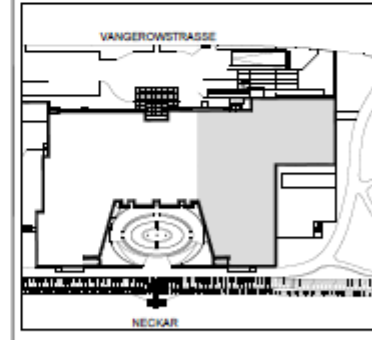
Gefährdete Personen mitnehmen
Evacuate endangered persons
Türen schließen
Close doors
Geplante Routen folgen
Follow marked escape routes
Aufzug nicht benutzen
Do not use elevators
Anweisungen beachten
Follow instructions

3. Löschversuch unternehmen
Tackle the fire



Feuerlöscher
Fire Extinguisher
Wandhydrant/ Löschschlauch
Wall Hydrant/ Fire Hose

Übersicht Overview



Heidelberg
Marriott Hotel



Planersteller: PlanTec
Datum der Planerstellung: 05 / 2016
Datum der Planänderung:
Plan-Nr.: 007 eg

◆ Safety Information

Escape and Rescue Plan **FLUCHT- UND RETTUNGSPLAN**

Erdgeschoss
Ground Floor

Legende

- Standort Location
- Befreiungsweg / Escape Route
- Notausgang / Emergency Exit
- Erste Hilfe / First Aid
- Notfenster / Emergency Window
- Sammelstelle (Parkplatz) / Assembly Point (Parking lot)
- Brandmelder / Manual Fire Alarm
- Aufzug / Elevators
- Treppe / Stairs
- Wandhydrant / Wall Hydrant

Verhalten bei Unfällen
In case of accidents
Ruhe bewahren
Keep calm

- Unfall melden**
Report the accident
 - ☎ Telefon: 9-112
Call: 9-112
 - Was passiert ist?
What happened?
 - Wie viele Verletzte?
How many people are injured?
 - Welche Art von Verletzungen?
What types of injuries?
 - Warten auf Rückfragen!
Wait for further questions!
- Erste Hilfe**
First aid
 - Abklärung des Unfalls
Research the accident scene
 - Übergang der Verletzten
Hand-über-Hand
 - Anweisungen beachten
Follow instructions
- Weitere Maßnahmen**
Further action
 - Notrufgebäude einleiten
Direct rescue services
 - Schadungsdokumentation
Damage documentation

Verhalten im Brandfall
In case of fire
Ruhe bewahren
Keep calm

- Brand melden**
Report the fire
 - ☎ Telefon: 9-112
Call: 9-112
 - Was ist passiert?
What happened?
 - Wie viele Verletzte?
How many people are injured?
 - Welche Art von Verletzungen?
What types of injuries?
 - Warten auf Rückfragen!
Wait for further questions!
- In Sicherheit bringen**
Evacuation
 - Definierte Fluchtwege einhalten
Follow designated escape routes
 - Trassee verlassen
Clear stairs
 - Defensivhalten
Hold back
 - Notrufgebäude einleiten
Direct rescue services
 - Schuldfrage vermeiden
Avoid blame
 - Anweisungen beachten
Follow instructions
- Löschversuch**
Understand
 - Feuertürschließer
Fire door
 - Feuertürschließer
Fire door
 - Wandhydrant / Wandhydrant
 - Wandhydrant / Wandhydrant

Heidelberg Marriott Hotel

Planersteller: Plan Tec

Datum der Planerstellung: 05 / 2016
Datum der Planänderung:
Plan-Nr.: 009 eg

Übersicht Overview

\ Orchestrating a brighter world

NEC



GOOD TO KNOW

High-speed Internet

Inclusive in the conference area and the public areas of the hotel

Parking

Underground car park, fee of € 2.50 per hour, € 25.00 per day

Restaurants

Grill 16 & Bar Pinte

Distances

Heidelberg Main Station 0.8 km, Frankfurt Airport 80 km

Locations & directions

[Google Maps](#)

VAT & Service

Charge All rates are inclusive the applicable VAT and service charge.
In case that the level of VAT should increase, the hotel reserves the right to adjust the offered rates accordingly.