



Interim Session Proposal | Mar 2023

Proposal to Host IEEE 802.1 Sept 2023 Interim Session

Abdul Jabbar
jabbar@ge.com



IEEE 802.1 Interim Session Proposal

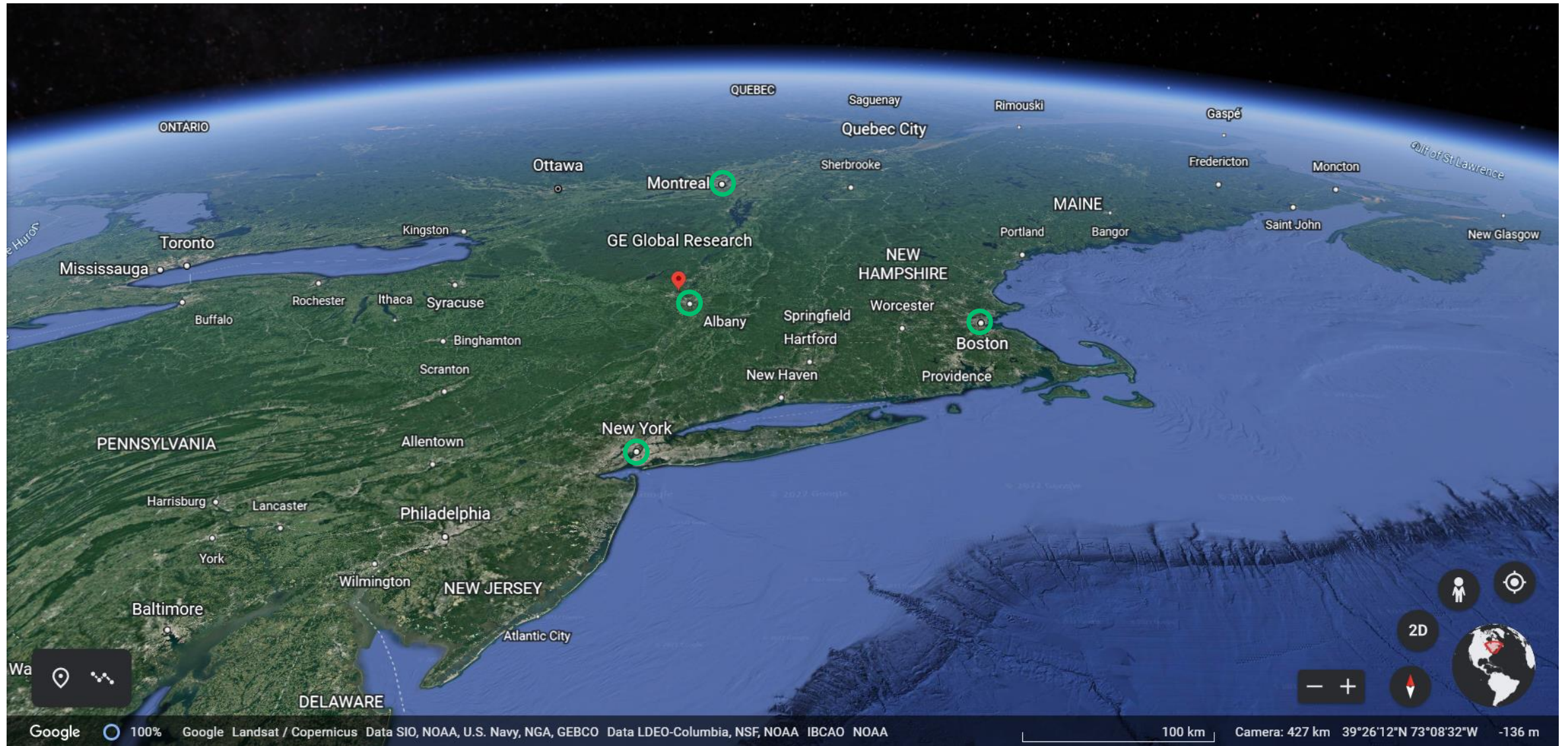
Mixed mode (in-person with remote participation)

- Date: Monday September 11th – Friday September 15th
- Location: Albany, NY
- Host Venue: GE Research
- Registration fee for all attendees: **USD 250**, covers
 - Site logistics support (meeting rooms, AV, Wi-Fi)
 - Lunch, mid-morning and mid-afternoon breaks (beverages, snacks)
 - On-site social/reception dinner
- Registration required for both in-person and remote participants
- No event cancellation fee
- Business hotel room block for lodging/accommodation
 - Estimated room rate with continental breakfast and Wi-Fi - \$110 to \$120 per night

Welcome to NY Capital District



Welcome to NY Capital District



Welcome to GE Research



Sprawling campus on the banks of Mohawk River
Original headquarters, established in 1900 by Thomas Edison

Welcome to GE Research



Travel Logistics



Transportation

By Plane

- GE Research Center is 15 mins (8 miles) away from Albany International Airport (ALB)
- ALB has many connections from New York, Washington, Atlanta, Chicago, and other major hubs
- <https://www.albanyairport.com/>

By Train

- Amtrak trains from major cities including New York, Boston, Washington, etc.
- <https://www.amtrak.com/home.html>

By Car

- Use your favorite mapping app to get to “1 Research Circle, Niskayuna, NY, 12309”
- Rideshare companies active in the area

Lodging

- Typical business hotel room block will be provided
- *Estimated* room rate with continental breakfast and Wi-Fi - \$110 to \$120 per night
- Cancellation policies set by the hotel

Protocols and Policies



Visitor Access

- Visitors will receive a visitor badge to be worn on site
- Attendees will have access to the “conference area” where meeting will be held
- Non-US persons must provide a copy of passport and business card and complete a “Foreign National Data Consent form” prior to the visit

If you are U.S. Citizen, Permanent Resident, Temporary Resident, Asylee, or Refugee, you are a “U.S. person” under 8 U.S.C. 1324b(a)(3).

COVID Protocols

All visitors must adhere to site COVID policies

- Visitors must verbally answer yes/no to COVID questionnaire
 - Currently, no face coverings are required on site
- *Have you, or anyone in your household, tested positive for COVID-19 in the past 10 days?*
 - *Are you, or anyone in your household, currently awaiting the results from a COVID-19 test?*
 - *Have you been diagnosed with COVID-19 in the past 10 days?*
 - *Have you been told that you are suspected to have COVID-19 by a licensed healthcare provider in the past 10 days?*
 - *Have you been in close, direct contact (<6' >15Min) with anyone who has tested positive, or is suspected to have, COVID-19 in the last 10 days?*



We look forward to hosting you at GE Research