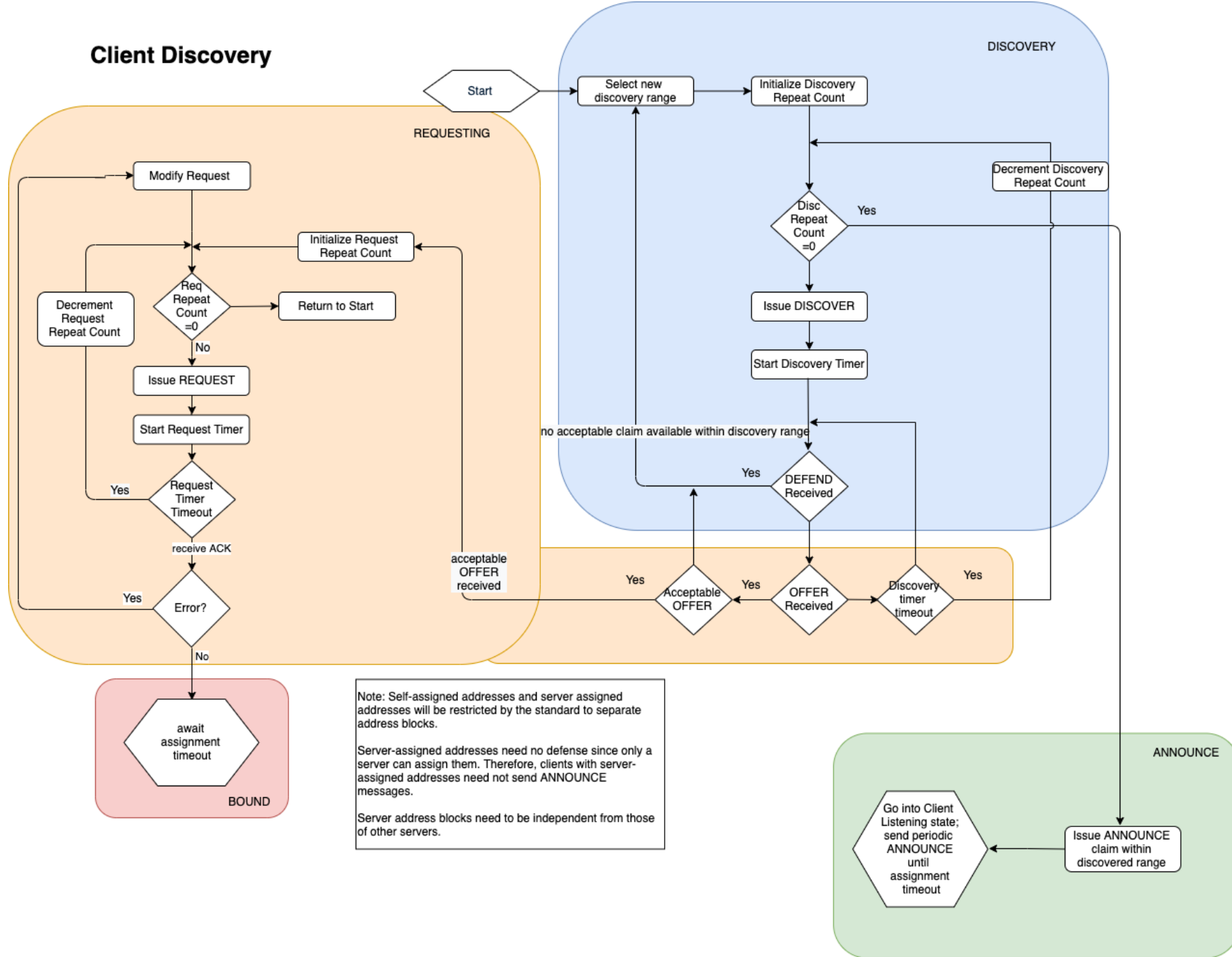


IEEE 802.1CQ State Machine

Antonio de la Oliva (Interdigital)

Roger Marks (EtherAirNet Associates)

Client Discovery



State Machine

- Working on the State Machine corresponding to previous flow diagram
 - See contribution [cq-aoliva-statemachine-1119-v0.pdf](#)

Issues

- Network partition issue, Possible solutions:
 - Use different address schema for server/self-claim
 - Keep alive for servers
- Race conditions with defend and discovery
 - What happens if you send defend but keep receiving Discovery