

Welcome to York

15th – 18th May 2012

IEEE 802.1 Meeting



Registration

- Registration cutoff date is March 30th, 2012
- Meeting registration fee (US dollars):
 - \$475 before the cutoff date
 - \$625 after the cutoff date
- No refunds after the cutoff date.
- Registration site: <http://www.acteva.com/go/8021>
- IEEE 802.1 meeting page: <http://ieee802.org/1/meetings>

BW Monkbar Hotel



BW Monkbar Hotel

- The Monkbar Hotel is at the very heart of York, overlooking the City walls and close to the very best that this vibrant and historic city has to offer. There's a wide choice of conference rooms and training suites for up to one hundred delegates, comfortable lounges, welcoming restaurant and bar and elegant Courtyard garden.

The only hotel at the centre of York to offer free parking for residents, and free WiFi Internet access throughout the hotel, winner of the Silver Award from Green Tourism for commitment to the environment.

For further details see <http://www.monkbarhotel.co.uk>

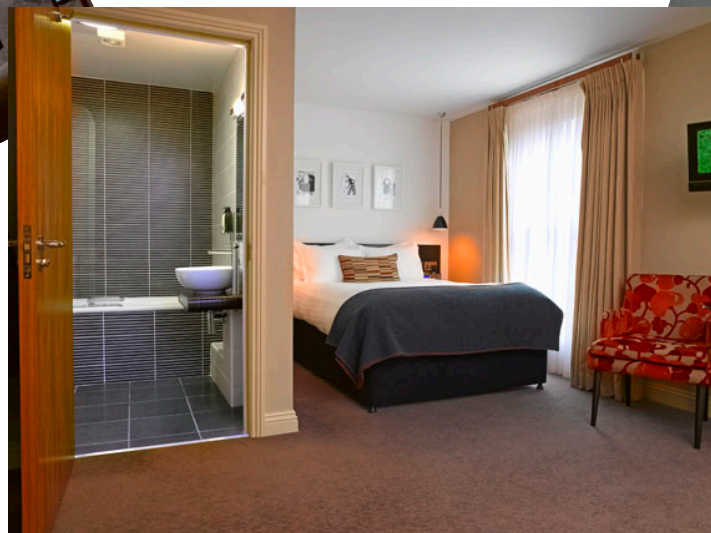
Room rates

- **£110.00** per night (Bed & Breakfast) for single occupancy in a double room.
- **£120.00** per night (Bed & Breakfast) for double occupancy in a double room.

A block of rooms has been reserved for this meeting until March 30th. Please contact Monkbar Hotel Reservations (Lynn Fairweather) on +44 1904 638086 or reservations@monkbarhotel.co.uk quoting IEEE.

Alternatively e-mail may2012meetings@advaoptical.com stating your requirements.

Churchill Hotel



Churchill Hotel

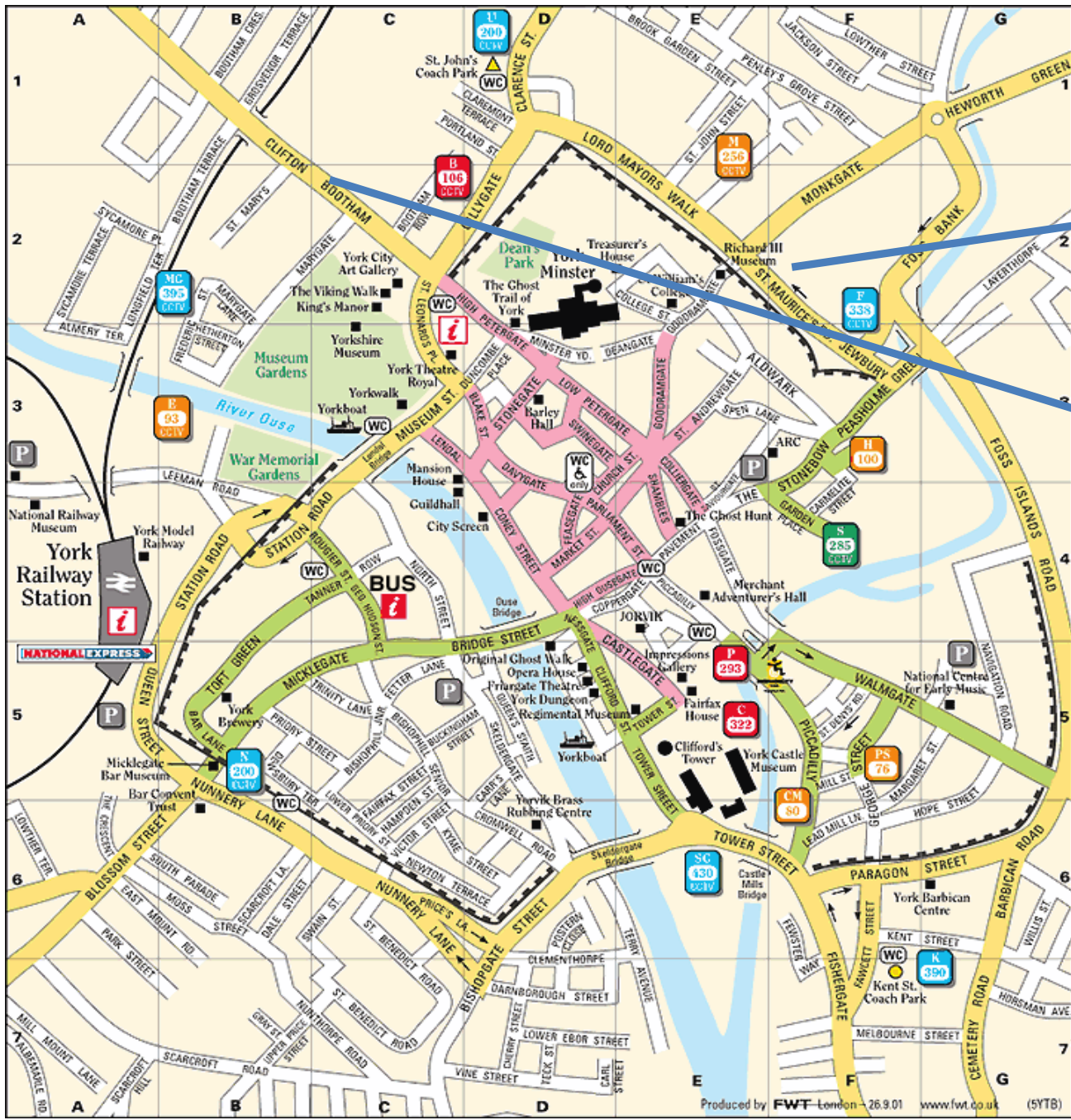
- The Churchill Hotel is a luxury hotel situated in York city centre. The building is a superb example of a late Georgian mansion built around 1827. The Churchill is one of the finest hotels in York.
- This historic hotel, filled with original features and grandeur, offers visitors to York a unique experience combining luxury accommodation, fine dining and exceptional service.
- Set in its own grounds, the Churchill is one of best situated hotels in York, just a short walk from the York Minster and all of York's major attractions.

Room Rates

- **£70.00** per night (Bed & Breakfast) for single occupancy in a double room.

There are a very limited number of rooms available at this hotel.

Please contact Judi Steel on +44 1904 699335 or alternatively e-mail may2012meetings@advaoptical.com stating your requirements.



Monkbar Hotel

Churchill Hotel

Social Event

16th May 2012



Evening Meal (with wine)
Venue to be confirmed



Please indicate how many attendees for the social event when registering for the IEEE 802.1 meeting



Visas

- Attendees from some countries may require a visa to visit the United Kingdom.
- If you require a visa invitation letter, please complete the following form and e-mail it to:
may2012meetings@advaoptical.com
- ADVA Optical Networking will then send you an invitation letter.
- Please ensure you apply in good time.

Invitation Letter request for a Visa Application to enter the United Kingdom

Full Name	
Title	Dr: _____ Mr: _____ Mrs: _____ Ms: _____
Date of Birth (DD-MM-YYYY)	
Name of Company	
Job title	
Contact Address	
Telephone Number	
E-mail address	
Passport Number	
Passport – place of issue	
Passport Expiration Date (DD-MM-YYYY)	
Nationality	
Expected Travel date to the UK (DD-MM-YYYY)	
Expected Departure date (DD-MM-YYYY)	
Please state to whom the letter should be addressed: (e.g. Consulate of and the full address)	Name: Address:



Getting to York

York is in easy travelling distance of various International Airports:-

Leeds Bradford Airport:

Take the 757 bus from the Airport to Leeds Train Station where there are frequent trains to York. Alternatively a taxi will cost in the region of £45.00 (one way)

Manchester Airport:

Catch the train from the Airport. Journeys to York take approximately 1 hour 50 minutes. Return fares are in the region of £33.00. www.nationalrail.co.uk

Heathrow Airport:

Catch the Heathrow Express train from the Airport to London Paddington (approximately 20 minutes). Here you will take the Underground to London Kings Cross (approximately 40 minutes). Trains from Kings Cross take approximately 2 hours and 15 minutes to reach York. Fares vary considerably. www.nationalrail.co.uk

Gatwick Airport:

Catch the Gatwick Express train(www.gatwickexpress.com) from the Airport to London Victoria Station (approximately 30 minutes). Here you will take the Underground to London Kings Cross (approximately 23 minutes). Trains from Kings Cross take approximately 2 hours and 15 minutes to reach York. Fares vary considerably. www.nationalrail.co.uk

London City Airport:

Catch the Docklands Light Railway (DLR) train direct from the Airport to London Kings Cross Railway Station. Journeys take approximately 32 minutes. www.londoncityairport.com then click on the tab 'Visiting the Airport' , 'Public Transport' to access the DLR site or alternatively visit <http://www.tfl.gov.uk/modalpages/2632.aspx>.

Getting to York

By Air



Leeds Bradford Airport:

Manchester Airport:

Heathrow Airport:

Gatwick Airport:

London City Airport:

www.lbia.co.uk

www.manchesterairport.co.uk

www.heathrowairport.co.uk

www.gatwickairport.co.uk

www.londoncityairport.com

By Road



York is situated midway between Edinburgh and London, just 20 miles from the M1 / M62 Motorway network, making a comfortable travelling time from most regions in the UK.

Accurate route plans can be obtained from www.theaa.com.

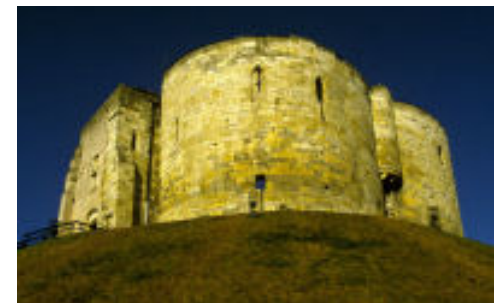
NB: cark parking in York is scarce and expensive.

York Tourism Links

For more information on York and its surrounding area please visit:

<http://www.visitthetwoyorks.org>

Where you will find a wide range of attractions, things to do and see, recommendations for eating out and historical facts.



We look forward to welcoming you to York in May

If you require any additional information please contact the following:

Meeting arrangements:

John Messenger

jmessenger@advaoptical.com

Mobile: +44 7887 572055

Office: +44 1904 699309

Accommodation queries, registrations, Visas or general information:

Judi Steel

may2012meetings@advaoptical.com

Mobile: +44 7825 064703

Office: +44 1904 699335