

Technical Onboarding for BERO v1.0.2

July 2022

[Start here →](#)



Content

Welcome	3
Overview.....	3
1. Customer Service Portal Account.....	3
2. General Information	3
3. PGP Key	4
4. SSH Keys.....	4
5. Deposit Upload	5
5.1. Deposit preparation	5
5.2. Deposit upload to DENIC Services SFTP server	5
6. Onboarding complete	6
I - Contact and Support.....	6

Welcome

Welcome to our Data Escrow Service. We are DENIC Services, a fully owned subsidiary of DENIC eG and rely on 20 years of experience in Internet technology.

As a Designated Escrow Agent for ICANN accredited Registrars and Approved Escrow Agent for gTLD Registries we fulfil all specifications. We are fully GDPR compliant, ISO certified for information security and business continuity management. Further our Data Escrow Service won the eco://award for innovation in domain name business.

Overview

This manual describes the onboarding process to our system through our Customer Service Portal. This is the first part, contracting.

During the onboarding process you will always have the menu on the left side with the next steps. A completed step has a checkmark. All steps must be completed.

1. Customer Service Portal Account

Our main contact will receive an admin-account for our customer service portal. The credentials will be sent by mail as a one-time-link. By clicking on the link a password reset will be forced. This process is protected by a second factor through your provided mobile phone number. This is your master account which can add more users over the admin section described later. In any cases regarding the portal this account will be contacted.

2. General Information

The general information section consists of three pages to prepare your account and the contract. Through three pages company information will be collected to prefill further forms.

General Information

- General Information
- PGP Key
- SSH Keys
- Deposit Upload

General Information

General Details

Full Company Name*

Street*

ZIP Code*

City*

Country
Afghanistan

* Required Fields

Next

3. PGP Key

Here you may provide us your public PGP key. The key needs to be valid. Your PGP key is necessary for uploading a deposit successfully.

- General Information
- PGP Key**
- SSH Keys
- Deposit Upload

PGP Key

Please provide us your public PGP key. The key needs to be valid. Your PGP key is necessary for uploading a deposit successfully.

PGP Key

```
-----BEGIN PGP PUBLIC KEY BLOCK-----
Version: BCPG C# v1.6.1.0

mQENBBlytABCACC32BgSEOfNlKtLFmj8dzlWzO17gD89kCWwf2MHvi4jhMcrHi
LMGjHFfWTV/CBY8SE/C48DVYPMrwGrhHQDWrcwAMB18Cq9Mlw2XLkuAF79oLj7Lh
xvktEWijwRx0+sdrYjUe3/RgBTDb6NSAFxDsYf8UDcrNnqBl/YLoTFyzLUzHagZK
HHYtNoLYyGsyKcCyyhKOBaEMeMPggp1zViQkf69Ro7QMIZX5GjNvQ3u8EomKtXM
PTB0aT51MGpOX2X1LzXSzdiZyqx+QReeO69yKLXupvALFWs4VMlAyNuTr9/c1rz
JfBNi3QvrrqUJ1SFHgB5WfwpH+oGodl947PABEBAAGOAikBHAQQAQIABgUCYGXK
OAAKCRABOaeCJo/lrT/3B/9ZX9RdqMQtNaqzZ3hTu9/L7f6qmkKaNMhaPKq+Ixc+
4yJYp51HEtbu9Hx2Pe4j/FUKvy8vyRCWF++1KM7Z74x/K69dlKr5b3oFGeqeiC
```

Save

For creating a PGP Key we recommend to use GnuPG:

- <https://gnupg.org> (Linux)
- <https://www.gpg4win.org> (Windows)

Validation period of at least 5 years and length 2048 Bit

Algorithms

RIPEMD160withRSA	SHA256withECDSA	SHA512withECDSA
RIPEMD160withECDSA	SHA384withDSA	SHA256withRSA
RIPEMD256withRSA	SHA384withECDSA	SHA384withRSA
SHA256withDSA	SHA512withDSA	SHA512withRSA

4. SSH Keys

Here you can add your public SSH key for logging in to our server. You may provide more than one key.

- General Information
- PGP Key
- SSH Keys**
- Deposit Upload

SSH Key

Please provide us your public SSH key(s). The key(s) need(s) to be valid. We support more than one key if you work with different keys on different servers.

+

ID	SSH Key	Edit
No key added		

You can use ssh-keygen at the command line for creating the SSH Key.

As an example: ssh-keygen -t rsa -b 4096

5. Deposit Upload

Here you will find your login and all information about deposit preparation and upload like this manual.

- General Information
- PGP Key
- SSH Keys
- Deposit Upload

Deposit Upload

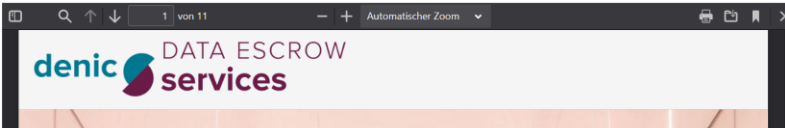
Credentials for uploading to our SFTP server

Please use the username and your SSH key to login to our SFTP server.

FQDN: **escrow.denic-services.de**

Username HowToBERO

Manual has been read Confirm



5.1. Deposit preparation

Please prepare your deposit files according to the official ICANN specifications:

ICANN Registry Agreement

XML Schema by IETF (rfc9022 and rfc 8909)

<https://datatracker.ietf.org/doc/rfc9022/>

<https://datatracker.ietf.org/doc/rfc8909/>



You must use our public production key to encrypt the deposit:

[DENIC Services RyDE public PGP Key.](#)

5.2. Deposit upload to DENIC Services SFTP server

Please use the provided Login and your SSH Key for uploading to our SFTP server.

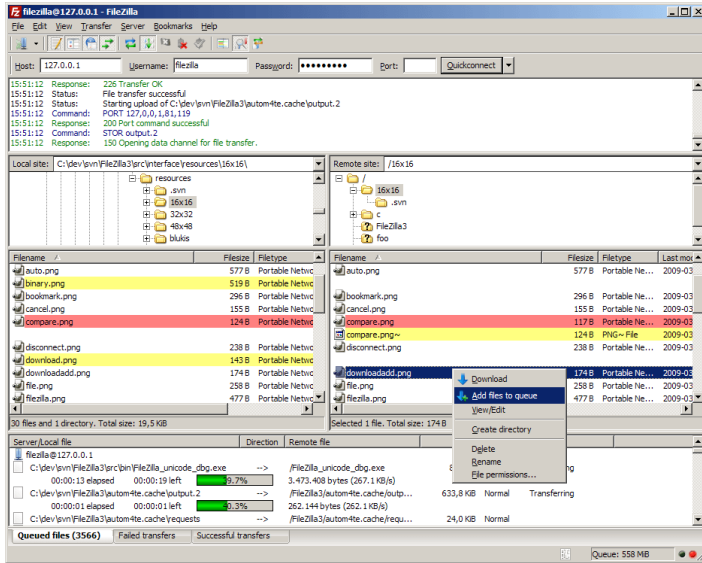
FQDN: escrow.denic-services.de

Login: e.g. RyDE-example

(provided in our Customer Service Portal)

You may use any SFTP application via terminal or client such as FileZilla:

[FileZilla Project.](#)



The number of simultaneous connections must be set to 1.

How to set it in FileZilla:

“Transfer Settings” → “Limit number of simultaneous connections” and set to 1.

6. Onboarding complete

Your onboarding is complete and you can now upload deposits for your customers.

Congratulations!

Onboarding complete

Thank you!

You have successfully completed the onboarding.

All of your information is saved in our systems and you are ready to start uploading your deposits.

For further questions please contact our Support: escrow@denic-services.de.

To access our Customer Service Portal, please click here:

[Enter Customer Service Portal](#)

I - Contact and Support

denic services



DENIC Services GmbH & Co. KG
Heinrich-Hertz-Str. 6
64295 Darmstadt
Germany



Phone +49-6151-62 92 710



Fax +49-6151-62 92 711



E-Mail escrow@denic-services.de



Internet <https://www.denic-services.de/en>